

Easy on the Environment and People

With the EX Series, signmakers can conduct their printing operations without headaches, dizziness or concerns about the environment. Revolutionary ECO-SOL INK is formulated to be gentle for both users

and the environment. Odor is much less than with hard solvent inks and requires no special ventilation or environmental equipment.



Cost Effective

Keeping costs low is a major concern of signmakers. With the EX, you can print on a wide variety of commercially available media. Choose from uncoated vinyl and banner materials for lower production costs, or Roland's premium SOL MEDIA, including backlit and glossy paper, for dependable outdoor and indoor use. As always, Roland provides unparalleled support, including profiles for over 50 of the most popular uncoated media.

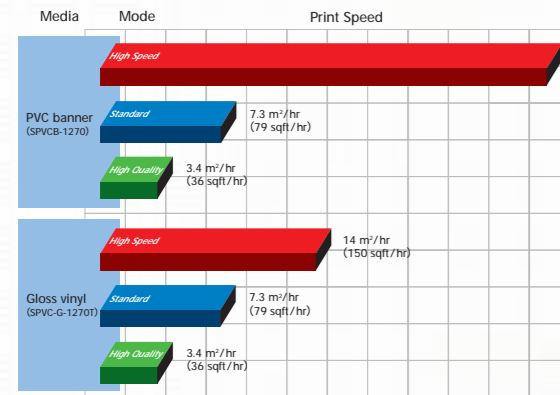
Roland's variable droplet technology and bundled Roland COLORIP software (RCR) help keep ink costs low by selecting the proper ink coverage and droplet size for optimum printing results. RCR also provides a number of convenient layout features, to help you achieve the most efficient media usage.

Outstanding Indoors and Out

Unlike hard solvent printers, the EX Series prints with virtually no odor, yet graphics can be installed both indoors or out. Thanks to Roland's ECO SOL INK, you can get up as close as possible to admire the details indoors while being confident of water, scratch, and UV resistance with up to three years durability outdoors*.

* Three years outdoor durability is based on accelerated weather tests conducted by Roland DG. Results may vary depending upon location and application.

Remarkable Production Velocity



Have you ever felt like you've been waiting all day for a print? You won't feel that way with the SOLJET PRO II EX series. The PRO II's remarkable production velocity—up to 28m²/hr (300 sqft/hr) at 450 x 360 dpi—is the result of over 100 individual technological enhancements. Six one-inch precision heads cover a larger print area while firing 360 nozzles per color. Multiple high-speed CPUs and a multitasking operating system reduce internal processing time. A built-in accelerated Ethernet print server doubles transmission speed to the main board. Included with the EX series, RCR provides simultaneous RIP&Print capabilities. It all adds up to peak production speed with no waiting.

Unsurpassed Print Quality

When it comes to quality printing, it's all about getting the right drops in just the right place, time and time again. It's not really art; it's precision engineering. With variable droplet Piezo print heads and a digital servo motor to control the media feed, the EX precisely controls droplet placement in both the print head travel and paper feed directions to



provide true 1440x1440 dpi resolution. The six precision print heads cover a large one-inch area and are designed in a unique in-line configuration for superior dot control.

Roland variable droplet technology utilizes microscopic ink droplets of three different sizes depending on the type of output. This technology delivers truly breathtaking output using six colors: CMYK plus light cyan and light magenta. For those who demand the very finest print quality, Roland provides a full lineup of SOL MEDIA.

High Performance, Professional Roland COLORIP Included

Designed especially for the PRO II series, Roland COLORIP (RCR) software provides precision color management and high-fidelity printing. Simultaneous RIP&Print capability, enhanced color management and several unique layout options are just a few of its powerful features.

Quick Configure™ delivers a major product advance in effortless printing. Just select the media type and the ideal mode for your application whether High Quality, Standard or High Speed. RCR automatically determines the optimum dot size, dot combinations, positioning, tone curve, and the proper amount of ink.

RCR is PostScript® compatible, allowing you to print easily from Adobe® Photoshop®, Adobe Illustrator®, Macromedia FreeHand®, QuarkXPress™ and other popular graphics software. You can also print directly from TIFF, PDF 1.4, JPEG, DCS 2.0, EPS and PS files.

ICC profiles customized for the EX Series printers ensure excellent printing results on a wide variety of coated and uncoated media. RCR also supports custom ICC input and output profiles generated from any industry standard profiling software. Separate color rendering intents (CRDs) can be applied to different elements of a PostScript document.

Powerful new scaling, rotation, and automatic layout features are an integral part of RCR. You can tile a job automatically or manually, or crop an image right in the RIP to fit a specific size requirement. RCR lets you nest multiple jobs to economize on media usage. Automatic step and repeat allows you to efficiently layout multiple page documents. With the label-printing feature, you can automatically attach notes including RIP settings to your work, creating more consistent results over multiple print runs.



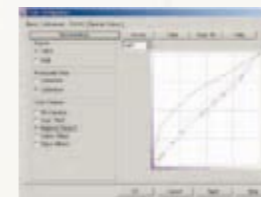
Manual Layout



Automatic Step and Repeat



Tiling

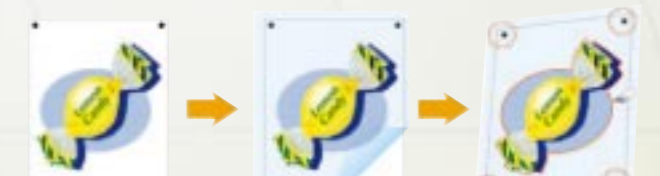


Density Curve Adjustment

Precision Contour Cutting with Quadralign™



The SC-540 EX makes quick work of precision contour cutting of decals, signs, labels, point of purchase displays and packaging prototypes. Once an image has been printed, it can be automatically contour cut without having to reload or reposition the media. Thanks to Roland's industry-leading cutting technology, the SC-540 EX cuts elegant arcs and curves with incredible accuracy at speeds up to 600 mm/sec (24"/sec). Printing and cutting operations can be handled simultaneously from a variety of software applications, including Adobe® Illustrator®, Adobe PageMaker®, CorelDRAW® and QuarkXPress™.



Automatically generates crop marks at the four corners.

Allows you to remove the print, laminate and then reload the media.

Recalculates the cutting path by adjusting to the crop mark position changes.

Legendary Roland Reliability

It's not surprising that Roland PRO II printers swept the wide format inkjet printing competition at the 2003 PMA Show in Las Vegas. Roland continues to set the standard for engineering excellence with the SOLJET PRO II EX. User-friendly features include:

- A 3-level lever to adjust head height for handling a wide variety of media from artist canvas or banner stock to fine films.
- ECO SOL INK is conveniently packaged in easy-to-handle 220 ml cartridges. When a cartridge is running low, the printer warns you and pauses the job so there's no partial print waste.

- An auto sheet cutter separates output from the roll after printing.
- A factory-integrated heating system opens the pores of the substrate, allowing the ECO-SOL INK to aggressively bond with the media. The result is improved UV and water resistance on a wide range of media, including both coated and uncoated stock.
- The EX's grit roller shaft features a digital servomotor and encoder to provide precision control of the media feed rate, resulting in artifact-free printing.



Easy-to-use ink cartridges



Built-in heating system

Ecology & Economy Now Roland gives you both!





nEXt Generation SOLJET Delivers Durable Outdoor Performance While Answering Concerns About the Environment

The news media reflects growing worldwide concerns about health and protecting the environment. Now, with Roland's revolutionary SOLJET PRO II EX Series, signmakers can produce durable, economical graphics without harm to themselves or the environment. Once again, Roland leads the way.



E
Easy on the Environment and People



C
Cost Effective



O
Outstanding Durability Indoors and Out



Model SJ-740EX Maximum media acceptance: 1879 mm (74")
Maximum printing width: 1869 mm (73-9/16")

Model SJ-640EX Maximum media acceptance: 1625 mm (64")
Maximum printing width: 1615 mm (63-9/16")

Model SJ-540EX Maximum media acceptance: 1371 mm (54")
Maximum printing width: 1361 mm (53-1/16")

Model SC-540EX Maximum media acceptance: 1371 mm (54")
Maximum printing width: 1346 mm (53")



Specifications

Model		SJ-740EX	SJ-640EX	SJ-540EX	SC-540EX
Printing / Cutting method		Printing: Piezo ink-jet method		Printing: Piezo ink-jet method / Cutting: media-moving method	
Printing / Cutting width		210 to 1869 mm (8-5/16 to 73-9/16 in.)	210 to 1615 mm (8-5/16 to 63-9/16 in.)	210 to 1361 mm (8-5/16 to 53-9/16 in.)	185 to 1346 mm (7-5/16 to 53 in.)
Acceptable media widths		For printing with the heater: 500 to 1879 mm (19-11/16 to 74 in.) For printing without the heater: 210 to 1879 mm (8-5/16 to 74 in.)	500 to 1625 mm (19-11/16 to 64 in.) 210 to 1625 mm (8-5/16 to 64 in.)	500 to 1371 mm (19-11/16 to 54 in.) 210 to 1371 mm (8-5/16 to 54 in.)	500 to 1371 mm (19-11/16 to 54 in.) 210 to 1371 mm (8-5/16 to 54 in.)
Conditions for usable medias		Maximum media thickness: 1.0 mm (0.039 in.) Maximum diameter for roll media: 180 mm (7-1/16 in.) Core inner diameter for roll media: 50.8 mm (2 in.) or 76.2 mm (3 in.) Maximum weight for roll media: 20 kg (44.1 lb.)		Cuttable media thickness: 0.08 to 0.22 mm (0.00315 to 0.00866 in.) (depending on media composition) Maximum cuttable media thickness including base paper: 0.4 mm (0.0157 in.) Maximum printable media thickness including base paper: 1.0 mm (0.039 in.) Maximum diameter for roll media: 180 mm (7-1/16 in.) Core inner diameter for roll media: 50.8 mm (2 in.) or 76.2 mm (3 in.) Maximum weight for roll media: 20 kg (44.1 lb.)	
Ink cartridges		Exclusive ECO-SOL INK cartridges			
Type		220 cc ± 5 cc			
Capacity		The six colors black, cyan, magenta, yellow, light cyan and light magenta			
Colors		Max. 1440 dpi			
Printing resolution		—			
Acceptable tool		Cutter (blade and blade holder): Special blade for CMM-1 series (depending on media composition)			
Cutting speed / force / offset		10 to 600 mm/s (10 to 300 mm/s in the media-feed direction) / 30 to 300 gf / 0.000 to 1.500 mm (0 to 0.0591 in.)			
Software resolution (When cutting)		0.025 mm/step (0.00984 in./step)			
Distance accuracy (For printing while the heater is running)		Error of less than ±0.3 % of distance traveled, or 0.3 mm, whichever is greater (at SV-G-1270G, print travel: 1 m, temperature: 20 °C (68 °F), humidity: 50 %, heater temperature: 40 °C (104 °F))			
Distance accuracy *1 (For cutting while the heater is not running)		Error of less than ±0.4 % of distance traveled, or 0.3 mm, whichever is greater (when distance correction has been performed (when the setting for [CALIBRATION] - [CUTTING ADJ.] has been made)). Error of less than ±0.2 % of distance traveled, or 0.1 mm, whichever is greater			
Repetition accuracy *1 (For cutting while the heater is not running)		0.1 mm or less (excluding stretching/contraction of the media) Range for assured repetition accuracy: For media with a width exceeding 610 mm (24 in.): Length 4000 mm (157-7/16 in.) For media with a width of 610 mm (24 in.) or less: Length 8000 mm (315-15/16 in.)			
Repetition between printing and cutting *1 (While the heater is not running)		±0.5 mm (0.0197 in.) max. at 25 °C (77 °F) (excluding possible shift caused by expansion/contraction of the media and/or by reloading the media, and provided that media length is under 3000 mm (118-1/16 in.))			
Alignment accuracy for printing and cutting when reloading media *1 (While the heater is not running)		Error of less than ±0.5 % of distance traveled, or 3 mm, whichever is greater (Guaranteed area of alignment for printing and cutting when reloading the media) *2			
Interface		Ethernet 10Base-T or 100Base-TX and Bidirectional parallel interface (compliant with IEEE 1284: Nibble mode, ECP mode (non-compression))			
Power consumption		Printing/Cutting mode: Maximum: 2.0 A / 100 V to 240 V ±10 %; 50/60 Hz Standby mode: Maximum: 0.6 A / 100 V to 240 V ±10 %; 50/60 Hz			
Acoustic noise level		Printing/Cutting mode: 65 dB (A) or less (According to ISO7779) Standby mode: 40 dB (A) or less (According to ISO7779)			
Heater unit *3		Setting range for the preset temperature: 30 to 50 °C (86 to 122 °F) *4 Power supply: AC 117 V, 200 to 240 V ±10 %; 50/60 Hz			
Power consumption		Operational: Maximum 5.6 A (117 V), 2.6 A (220 to 240 V) Standby: Maximum 0.1 A	Operational: Maximum 4.9 A (117 V), 2.2 A (220 to 240 V) Standby: Maximum 0.1 A	Operational: Maximum 3.6 A (117 V), 1.9 A (220 to 240 V) Standby: Maximum 0.1 A	Operational: Maximum 3.6 A (117 V), 1.9 A (220 to 240 V) Standby: Maximum 0.1 A
Dimensions (with stand)		3134 mm (W) x 742 mm (D) x 1300 mm (H) (123-7/16 in. (W) x 29-1/4 in. (D) x 51-3/16 in. (H))	2953 mm (W) x 742 mm (D) x 1300 mm (H) (116-5/16 in. (W) x 29-1/4 in. (D) x 51-3/16 in. (H))	2699 mm (W) x 742 mm (D) x 1300 mm (H) (106-5/16 in. (W) x 29-1/4 in. (D) x 51-3/16 in. (H))	2699 mm (W) x 742 mm (D) x 1300 mm (H) (106-5/16 in. (W) x 29-1/4 in. (D) x 51-3/16 in. (H))
Weight (with stand)		179 kg (394.6 lb.)	175 kg (385.8 lb.)	151 kg (332.9 lb.)	157 kg (346.1 lb.)
Recommended environment		Power on: Temperature: 20 to 32 °C (68 to 89.6 °F), Humidity: 35 to 80 % (non-condensing) Power off: Temperature: 5 to 40 °C (41 to 104 °F), Humidity: 20 to 80 % (non-condensing)			
Accessories		Roland COLORB™ CD-ROM: 1, Roland-PrintServer CD-ROM: 1, power cord: 1, drain bottle: 1, replacement blade for separating knife: 1, cleaning kit: 1, SOL INK cleaning cartridge: 4, user's manual: 1, Roland-PrintServer network settings guide: 1		Roland COLORB™ CD-ROM: 1, Roland-PrintServer CD-ROM: 1, drain bottle: 1, blade: 1, blade holder: 1, replacement blade for separating knife: 1, cleaning kit: 1, SOL INK cleaning cartridge: 4, user's manual: 1, Roland-PrintServer network settings guide: 1	

*1: For the SC-540EX, the following items are not guaranteed when cutting while using the heater.
*2: Distance accuracy (when cutting); 2. Repetition accuracy (when cutting); 3. Repetition between printing and cutting; 4. Alignment accuracy for printing and cutting when reloading media.
*3: Temperature: 25 °C (77 °F) / Media type: SV-G-1270G / Data size: 3000 mm in the media-feed direction, 1000 mm in the carriage-movement direction / The required length for cutting must be pulled out from the roll / No lamination / When reloading media, at the menu, select [BASE-ALIGN] to automatically detect crop marks. / Excludes the effects of slanted movement and of expansion and contraction of the media.
*4: A separate power supply is required for the heating unit.
*5: The heater temperature may not reach the preset temperature depending on ambient conditions or the width of the media. Unevenness in temperature may be larger depending on ambient conditions or the width of the media.

Options

SOL MEDIA	SPVC-G-1270T	Vinyl sheet with gloss surface, adhesive, 1270 mm x 20 m (50" x 65')	ESL-MG	Magenta, 220 cc
	SPVCB-1870	PVC banner, 1870 mm x 15 m (74" x 49')	ESL-YE	Yellow, 220 cc
	SPVCB-1600	PVC banner, 1600 mm x 20 m (63" x 65')	ESL-CY	Cyan, 220 cc
	SPVCB-1270	PVC banner, 1270 mm x 20 m (50" x 65')	ESL-BK	Black, 220 cc
	SVB-B-1270	PVC banner, blackout, 1270 mm x 20 m (50" x 65')	ESL-LC	Light cyan, 220 cc
	SV-G-1270G	Gray adhesive vinyl, 1270 mm x 20 m (50" x 65')	ESL-LM	Light magenta, 220 cc
	SP-M-1270	Matte PET film, 1270 mm x 30 m (50" x 98')	SL-CL	1 pc.
	SPP-G-1250	Glossy paper, 1250 mm x 30 m (49-3/16" x 98')	ZEC-U1005	For signage vinyl in general, 5 pcs.
	SPC-1300	Polyester cloth, 1300 mm x 30 m (51-1/8" x 98')	ZEC-U5025	For thick, reflective and fluorescent vinyl, 5 pcs.
	SPF-1-1800	Backlit film, 1300 mm x 30 m (51-1/8" x 98')	XD-CH3	Blade holder with blade extension adjuster, made of resin
SOM-GBMH-50-1180	Polyethylene banner, 1180 mm x 50 m (46-7/16" x 164')	XD-CH2	Blade holder with blade extension adjuster, made of aluminum	
SOM-GPPG-50-914	White glossy photo paper, 914 mm x 50 m (36" x 164')			
SOM-GPPG-50-1270	White glossy photo paper, 1270 mm x 50 m (50" x 164')			
SOM-GWWG-40-1370	Monomeric calendared self adhesive vinyl white glossy permanent adhesive, 1370 mm x 40 m (53-7/8" x 131')			
SOM-GWWG-40-1525	Monomeric calendared self adhesive vinyl white glossy permanent adhesive, 1525 mm x 40 m (60" x 131')			

Optional Take-up Roller automatically rolls up media for unattended overnight or oversize output.

Take-up Roller
TU-750 for SJ-740EX
TU-650 for SJ-640EX
TU-550 for SJ-540EX/SC-540EX



*Automatic rolling function can only be used during printing.

Roland reserves the right to make changes in specifications, materials or accessories without notice. Your actual output may vary. For optimum output quality, periodic maintenance to critical components may be required. Please contact your Roland dealer for details. No guarantee or warranty is implied other than expressly stated. Roland shall not be liable for any incidental or consequential damages, whether foreseeable or not, caused by defects in such products.

PostScript is a trademark of Adobe Systems Incorporated. All other trademarks are the property of their respective owners.

SOLJET PRO II

Sign Maker by Roland DG Corporation

EX

Model

